



December 05, 2019

**Rainforth Grau Architects Project No. 18-1381**  
DSA File and Application No. 39-H8 / 02-117815  
PTN: 75499-143

**ADDENDUM NO. 02**

Tracy High School – New Parking Lot  
Tracy, California

\_\_\_\_\_  
Rainforth Grau Architects

\_\_\_\_\_  
Warren Consulting Engineers, Inc.



1. ALL WORKMANSHIP, MATERIALS, APPLIANCES AND EQUIPMENT which may be included in the following items shall be the same relative quantity as described for similar work set forth in the original or main specifications of which these Addendum items shall be considered a part.
2. ADDENDUM  

AD02.1	REPLACEMENT TO SHEET C1.1 (AD01.1 from Addendum No.01)
AD02.2	REPLACEMENT TO SHEET C2.1
AD02.3	REPLACEMENT TO SHEET A1.1.1
AD02.4	REVISION TO SHEET A1.1.2
3. PROJECT MANUAL NONE
4. DRAWINGS
  - A. Sheet C1.1, Demolition Plan (AD01.1 from Addendum No.01)
    1. DELETE sheet in its entirety and REPLACE with sheet AD02.1, included with this addendum.

B. Sheet C2.1, Grading and Drainage Plan

1. DELETE sheet in its entirety and REPLACE with sheet AD02.2, included with this addendum.

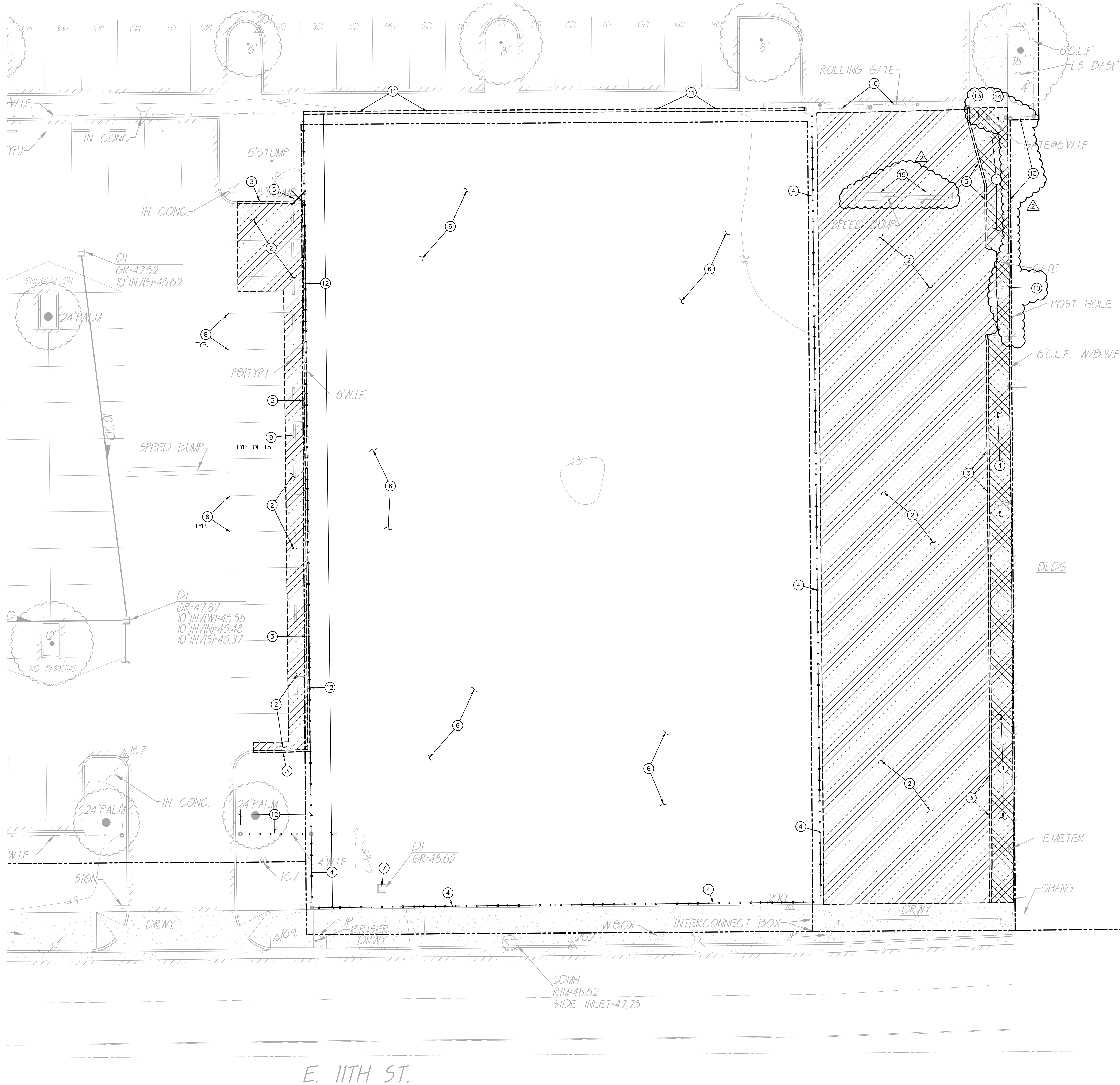
C. Sheet A1.1.1, Enlarged Plans

1. DELETE sheet in its entirety and REPLACE with sheet AD02.3, included with this addendum.

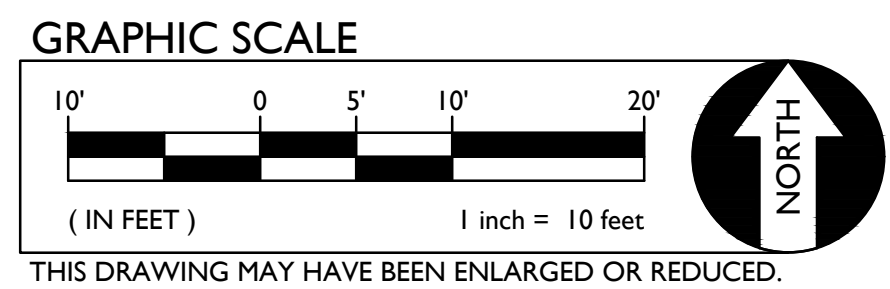
D. Sheet A1.1.2, Site Details

1. REVISE detail 4 per sheet AD02.4 included with this addendum.

\* \* \* END OF ADDENDUM \* \* \*



- DEMOLITION NOTES**
1. REMOVE EXISTING CONCRETE PAVING AND AGGREGATE BASE. WHERE SAWCUTS ARE NECESSARY, THEY SHALL BE A NEAT STRAIGHT LINE. CUT SHALL BE MADE AT NEAREST EXISTING JOINT TO LOCATION SHOWN.
  2. REMOVE EXISTING ASPHALT PAVING AND AGGREGATE BASE. WHERE SAWCUT EDGES ARE SHOWN, THEY SHALL BE A NEAT STRAIGHT LINE. MAINTAIN CLEAN STRAIGHT CUT EDGE UNTIL NEW PAVING PLACED.
  3. REMOVE AND DISPOSE OF EXISTING CONCRETE CURB.
  4. REMOVE AND DISPOSE OF EXISTING CHAIN LINK FENCE, POSTS AND ASSOCIATED FOOTINGS.
  5. REMOVE AND DISPOSE OF EXISTING TREE STUMP AND ASSOCIATED ROOTS.
  6. CLEAR, GRUB AND REMOVE EXISTING VEGETATION.
  7. EXISTING DROP INLET TO REMAIN.
  8. BLACK OUT EXISTING PARKING STALL STRIPING.
  9. REMOVE AND DISPOSE OF EXISTING PARKING BUMPERS.
  10. EXISTING GATE TO REMAIN.
  11. REMOVE AND DISPOSE OF EXISTING 8FT TALL CMU WALL AND ASSOCIATED FOOTINGS.
  12. REMOVE AND DISPOSE OF EXISTING ORNAMENTAL FENCE, POSTS AND ASSOCIATED FOOTINGS.
  13. EXISTING FENCING TO REMAIN.
  14. REMOVE AND DISPOSE OF EXISTING GATE. EXISTING GATE POSTS TO REMAIN.
  15. REMOVE AND DISPOSE OF EXISTING SPEED BUMP.



IDENTIFICATION STAMP  
DIV. OF THE STATE ARCHITECT  
02-117815  
AC \_\_\_\_\_ FLS \_\_\_\_\_ SS \_\_\_\_\_  
DATE \_\_\_\_\_

rainforth  
grau  
architects



**WCE**  
WARREN CONSULTING ENGINEERS, INC.  
1117 WINDFIELD WAY, SUITE 110  
EL DORADO HILLS, CA 95762 | (916) 985-1870

TRACY HIGH SCHOOL NEW PARKING  
LOT

TRACY JOINT UNIFIED SCHOOL DISTRICT  
TRACY, CA

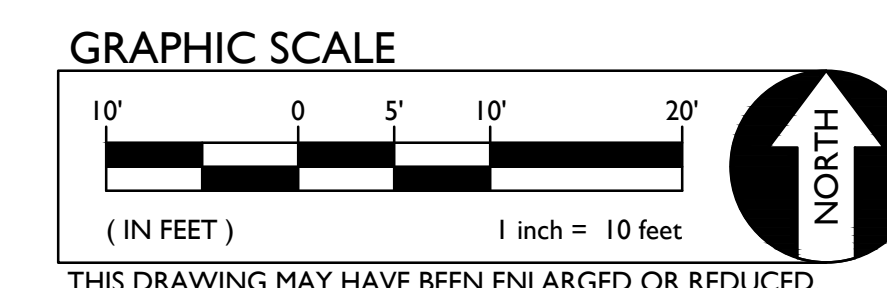
ADDENDUM #2 12/05/19

Copyright © 2019 Rainforth Grau Architects. All rights reserved.  
Reproduction of these plans, either in whole or in part, including  
any form of copying and/or preparation of derivative works thereof,  
for any reason without prior written permission, is strictly prohibited.

DEMOLITION PLAN

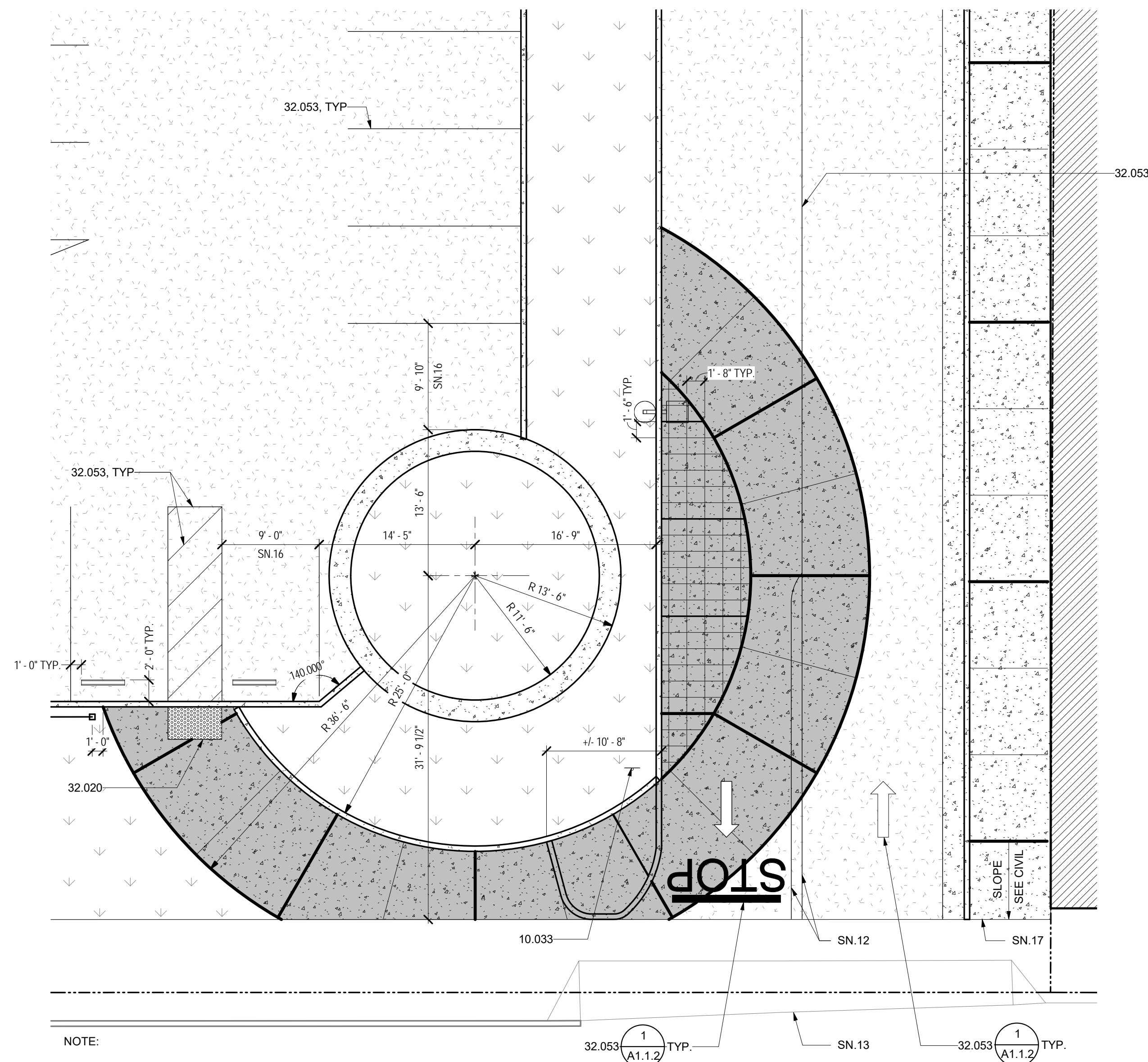
PROJECT NO. 18-1381  
DATE: 7/15/19  
SHEET C1.1  
AD02.1



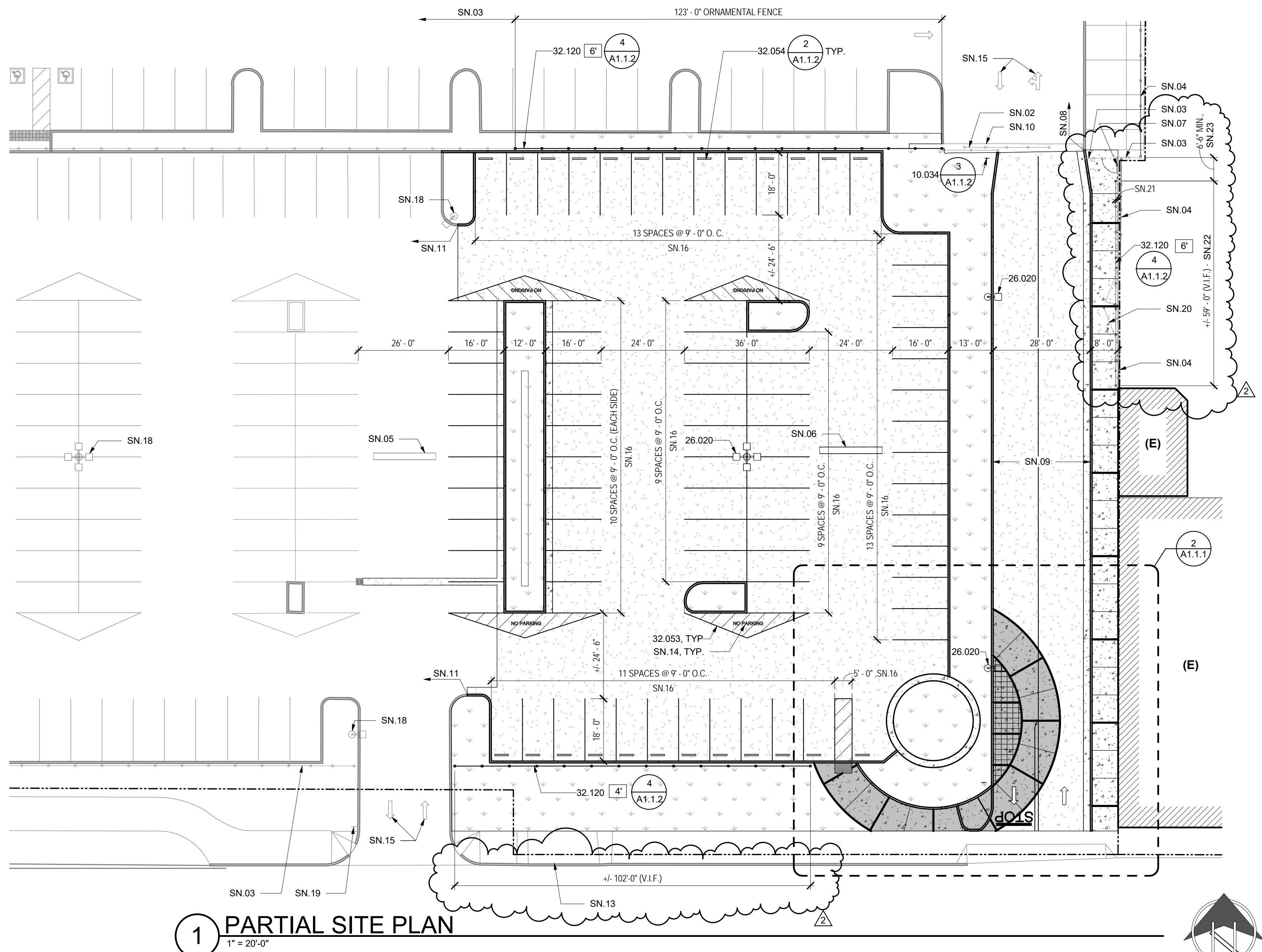




01/28/2019 Tracy High School - New Parking - Master - 01/28/2019



2 ENLARGED PLAN



## LEGEND

- PROPERTY LINE
- UNIT DESIGNATION
- EXISTING BUILDINGS
- EXPANSION JOINT
- CONCRETE WALK / PAVING CONTROL JOINT
- INTEGRAL COLORED CONCRETE PAVING
- ASPHALT CONCRETE PAVING
- LANDSCAPE
- CHAIN LINK FENCE
- ORNAMENTAL FENCE
- FENCE HEIGHT
- POLE MOUNTED LIGHT

## SHEET NOTES

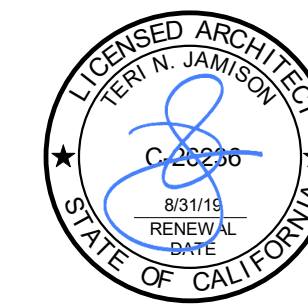
- SN.01 CHAINLINK FENCE INSTALLED IN (E) GAP LEFT BY DEMOLISHED FENCE
- SN.02 (E) ROLLING GATE TO REMAIN. PROTECT DURING CONSTRUCTION. REPLACE ANY PARTS DAMAGED DURING CONSTRUCTION.
- SN.03 (E) ORNAMENTAL FENCE TO REMAIN. PROTECT DURING CONSTRUCTION.
- SN.04 (E) CHAINLINK FENCE TO REMAIN
- SN.05 (E) SPEED BUMP TO REMAIN
- SN.06 SPEED BUMP. SEE CIVIL DETAIL 13/C5.1
- SN.07 REMOVE (E) 4'-0" W X 6'-0" H ORNAMENTAL GATE AND REPLACE PER (S) (A1.1.2)
- SN.08 (E) WALKWAY TO REMAIN
- SN.09 PAINT CURB FACE AND 6" ON TOP RED WITH 4" TALL WHITE TEXT THAT READS "NO PARKING - FIRE LANE" AT 20'-0" O.C.
- SN.10 (E) CONCRETE APRON TO REMAIN
- SN.11 (E) CONCRETE CURB TO REMAIN
- SN.12 STRIPING PER CALTRANS DETAIL 21
- SN.13 (E) DRIVEWAY ACCESS TO REMAIN
- SN.14 CENTERED WITHIN THE ZONE, PAINT THE WORDS "NO PARKING" IN 12" HIGH LETTERS MIN.
- SN.15 (E) DIRECTIONAL ARROW TO REMAIN
- SN.16 DIMENSION IS TO CENTERLINE OF STRIPING
- SN.17 EDGE OF (E) OFF-SITE
- SN.18 (E) LIGHT FIXTURE. REFER TO E1.1 FOR SCOPE OF WORK
- SN.19 (E) STOP SIGN TO REMAIN. PROTECT DURING CONSTRUCTION
- SN.20 (E) CHAIN LINK GATES TO REMAIN
- SN.21 CENTER OF FENCE POST @ 8" FROM EDGE OF (N) WALK
- SN.22 OFF-SET (N) FENCE POSTS TO AVOID CONFLICT BETWEEN (N) FENCE POST FOOTINGS AND (E) FENCE POST FOOTINGS. REFER TO THE SPECIFICATION FOR POST SPACING
- SN.23 BETWEEN (E) FENCE AND OUTSIDE FACE OF (N) FENCE POST

## KEYNOTES

- 10.033 SIGNAGE: ON-SITE STOP SIGN
- 10.034 SIGNAGE: PARKING LOT ENTRANCE
- 26.020 LIGHT FIXTURE
- 32.020 TRUNCATED DOMES (C5.1)
- 32.053 PAVEMENT MARKING
- 32.054 PRECAST CONCRETE BUMPER
- 32.120 ORNAMENTAL METAL FENCE

IDENTIFICATION STAMP  
DIV. OF THE STATE ARCHITECT  
02-117815  
AC \_\_\_\_\_ FLS \_\_\_\_\_ SS \_\_\_\_\_  
DATE \_\_\_\_\_

rainforth  
grau  
architects  
rga



TRACY HIGH SCHOOL - NEW PARKING  
LOT

TRACY JOINT UNIFIED SCHOOL DISTRICT  
TRACY, CA

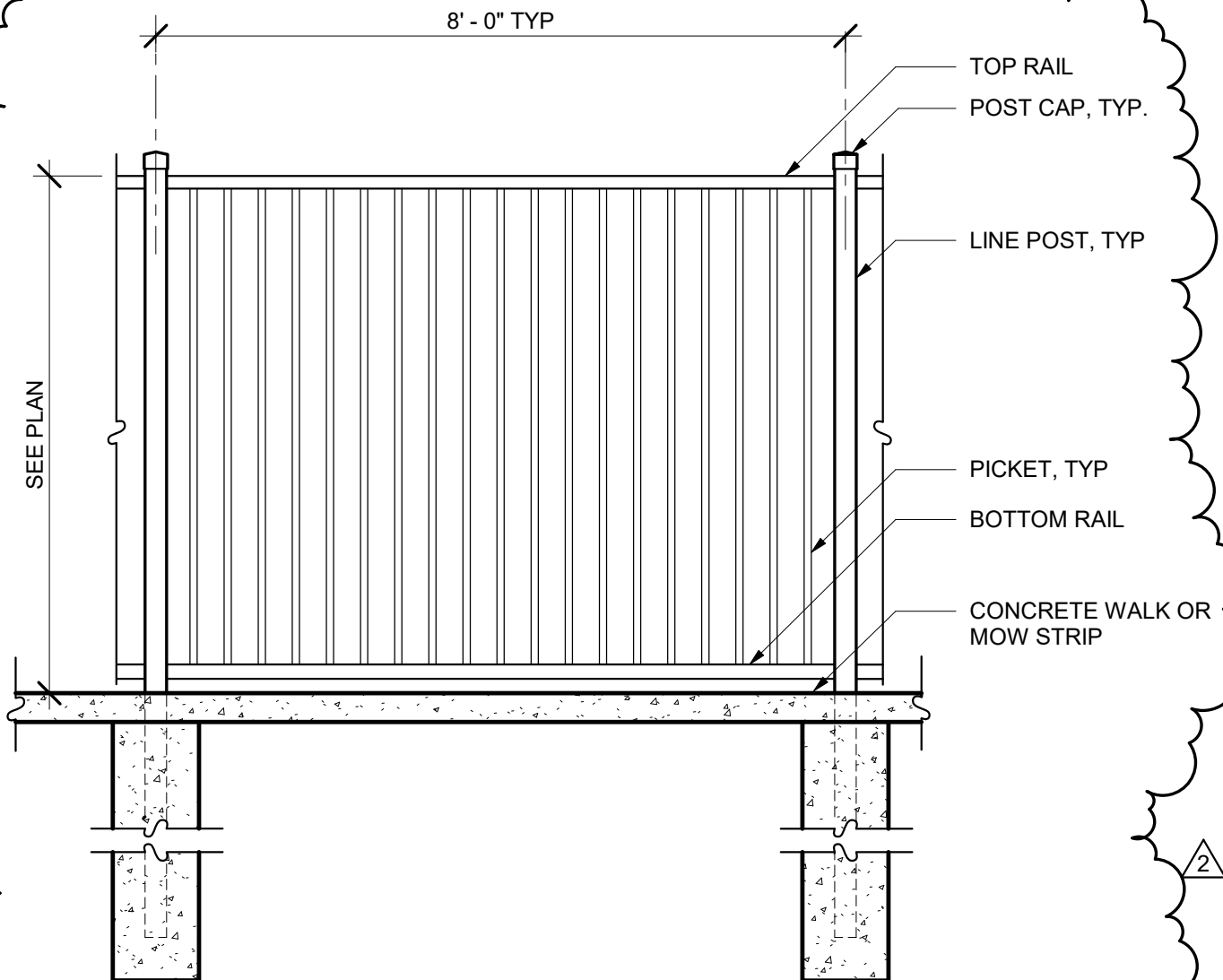
## Revision

2. Revision 2 12/05/19

Copyright © 2019 Rainforth Grau Architects. All rights reserved.  
Reproduction of these plans, either in whole or in part, including  
any form of copying and/or preparation of derivative works thereof,  
for any reason without prior written permission, is strictly prohibited.

## ENLARGED PLANS

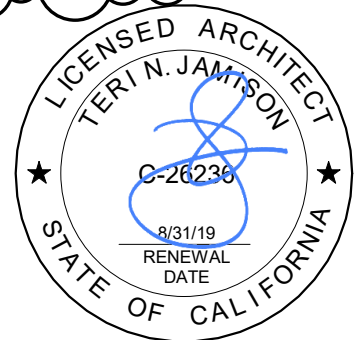
PROJECT NO. 18-1381  
DATE: 7/15/19  
SHEET A1.1.1



4

## ORNAMENTAL METAL FENCE

1/2" = 1'-0"



ALL FEATURES, NOTES AND DIMENSIONS NOT SPECIFICALLY SHOWN OR NOTED  
AS CHANGED SHALL REMAIN AS SHOWN ON PREVIOUSLY ISSUED DOCUMENTS.

ADDENDUM 2



A1.1.2

4/A1.1.2

TRACY HIGH SCHOOL - NEW PARKING LOT  
TRACY JOINT UNIFIED SCHOOL DISTRICT  
TRACY, CA

DSA APP. #: 02-117815 FILE #: 39-H8

DATE: 12/05/19

PROJECT NO.: 18-1381

SHEET:

AD02.4